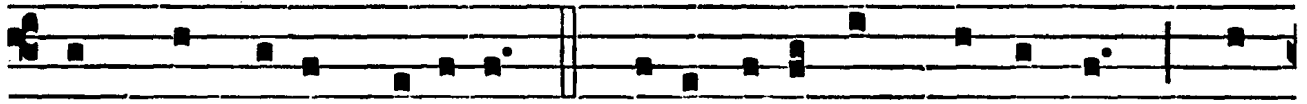


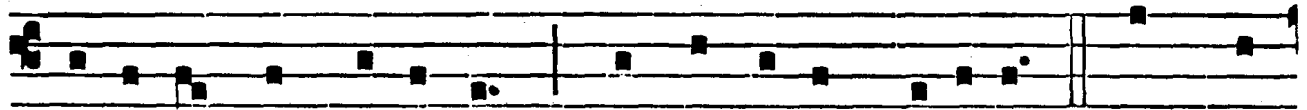
Seq.
2.
S



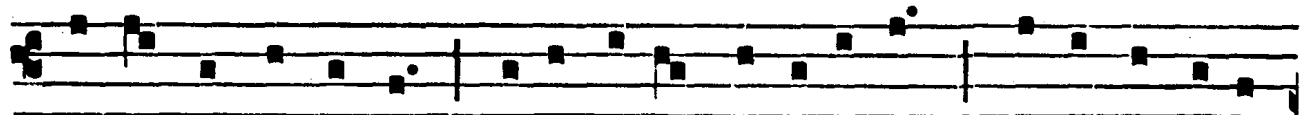
Tábat Má-ter do-loró-sa Juxta crúcem lacrimósa,



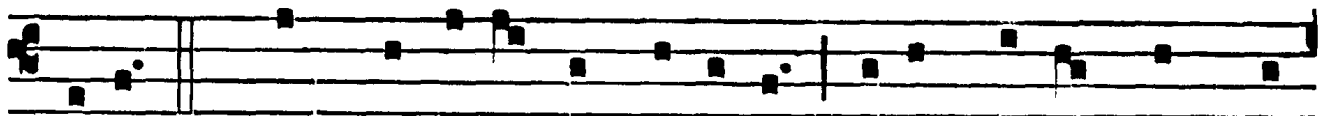
Dum pendébat Fí-li- us. 2. Cújus ánimam geméntem, Con-



tristá-tam et do-léntem, Pertransí-vit gládi- us. 3. O quam



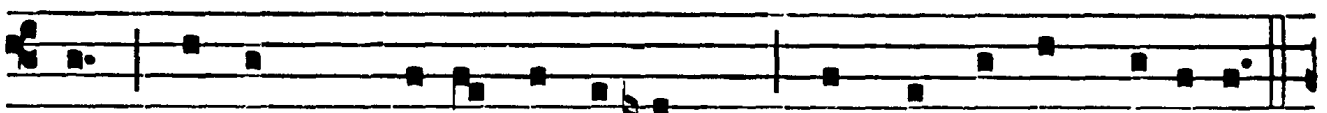
trístis et afflícta Fú-it ílla benedícta Má-ter Unigé-



ni-ti! 4. Quae maerébat et do-lébat, Pí- a Má-ter, dum vi-



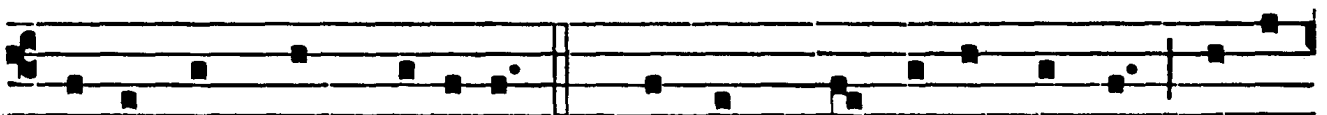
débat Ná-ti poénas ínclý-ti. 5. Quis est hómo qui non flé-



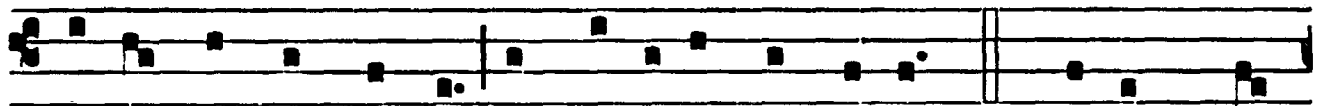
ret, Mátrem Chrísti si vi-dé-ret In tánto supplí-ci- o?



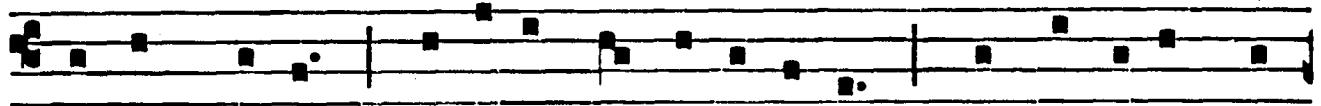
6. Quis non pósset contristári, Chrísti Mátrem contemplá-ri



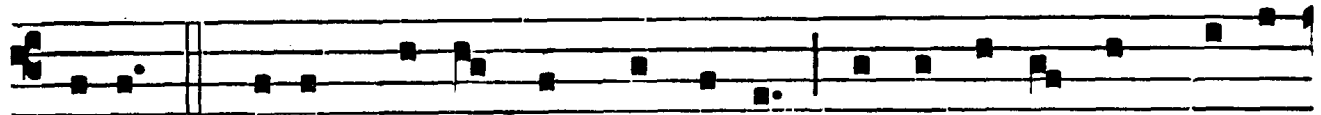
Do-léntem cum Fí-li-o? 7. Pro peccá-tis sú-ae géntis Ví-dit



Jé-sum in torméntis, Et flagéllis súbdi-tum. 8. Ví-dit sú-um



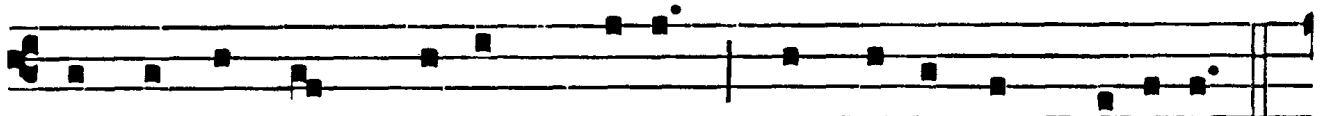
dúl-cem ná-tum Mo-ri-éndo de-so-lá-tum, Dum emí-sit spí-



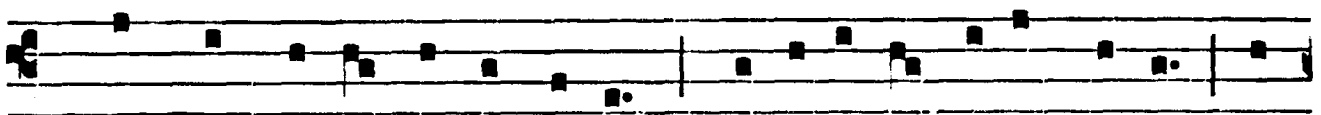
ri-tum. 9. E-ia Má-ter, fons amó-ris, Me sentí-re vim do-ló-



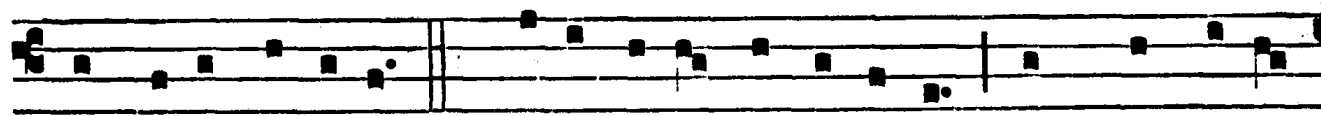
ris Fac, ut té-cum lúge-am. 10. Fac ut árde-at cor mé-um



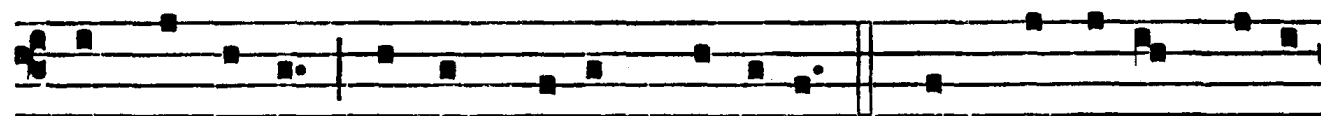
In amándo Chrístum Dé-um, Ut sí-bi compláce-am.



11. Sáncta Má-ter, ístud ágas, Cru-ci-fí-xi fíge plágas Cór-



di mé-o vá-lide. 12. Tú-i ná-ti vulne-rá-ti, Tam digná-ti



pro me pá-ti, Poé-nas mé-cum dí-vidé. 13. Fac me té-cum pi-e



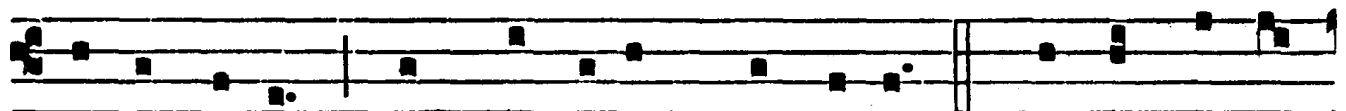
flé-re, Cru-ci-fíxo condo-lé-re, Donec égo víxero. 14. Juxta



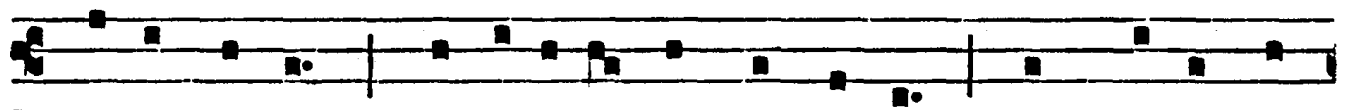
crúcem técum stáre, Et me tí-bi so-ci-áre In plán-



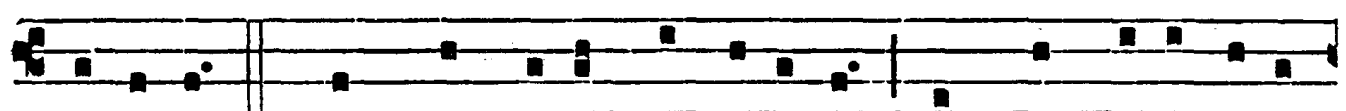
ctu de-sídero. 15. Vírgo vírgi-num praeclára, Mí-hi jam non



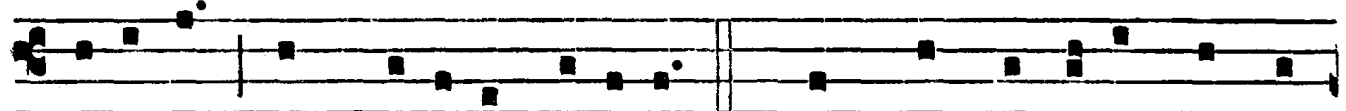
sis amá-ra : Fac me técum plánge-re. 16. Fac ut pórtém



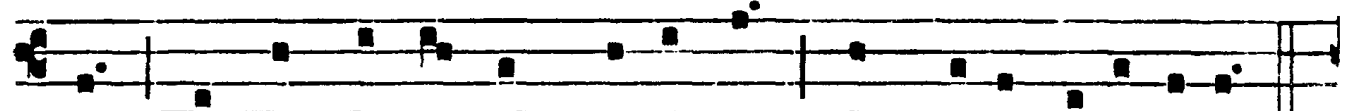
Chrísti mórtem, Passi-ónis fac consórtem, Et plágas re-



có-le-re. 17. Fac me plágis vulnerá-ri, Fac me crúce ine-



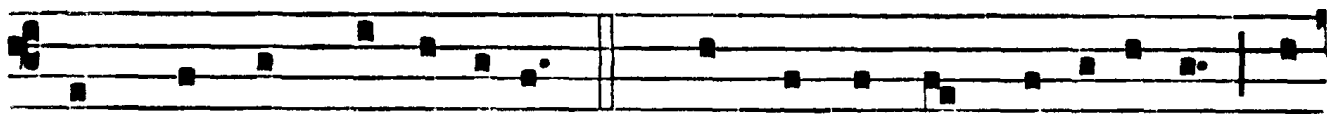
bri-á-ri, Et cru-óre Fí-li-i. 18. Flámmis ne úrar succén-



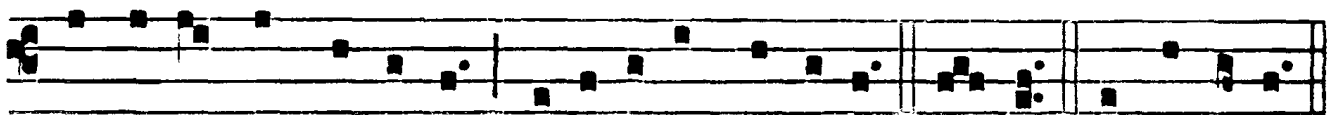
sus, Per te Vírgo, sim defénsus In dí-e judí-ci-i.



19. Chríste, cum sit hinc exí-re, Da per Mátrem me vení-re



Ad pálmam victó-ri-ae. 20. Quando córpus mo-ri-é-tur, Fac



ut ánimae doné-tur Paradí-si gló-ri-a. Amen. Alle-lú-ia.